



**Just Hoods<sup>®</sup>**

**AWDiS**



THE HOODIE IS A STAPLE OF ANY YOUNG URBANITE'S WARDROBE, AND FOR FOURTEEN YEARS JUST HOODS® HAVE SUPPLIED STREETWEAR START-UPS, SPORTS TEAMS AND MUSICIANS WITH TOP QUALITY, CONTEMPORARY DESIGNS IN THE LARGEST VARIETY OF COLOURS AVAILABLE.



WE ALWAYS DO THINGS THE RIGHT WAY, WHICH IS WHY WE ONLY USE WORLDWIDE RESPONSIBLE ACCREDITED PRODUCTION (WRAP) AND SEDEX CERTIFIED FACTORIES.

AS PART OF JUST HOODS SUSTAINABILITY JOURNEY, ALL GARMENTS ARE OFFICIALLY PETA-APPROVED VEGAN AND 100% FREE OF ANY ANIMAL INGREDIENTS.

CHECK OUT OUR WEBSITE FOR MORE INFORMATION.

f@JUSTHOODS @JUSTHOODS @JUSTHOODS

WWW.JUSTHOODSBYAWDIS.COM

# THE HOME OF THE HOODIE



FASHION  
SHOULDN'T  
COST THE  
EARTH



JH250 Organic Zoodie/  
Heather Grey Page 64



JH201 Organic Hoodie/Baby Pink Page 14  
JH201 Organic Hoodie/French Navy Page 14

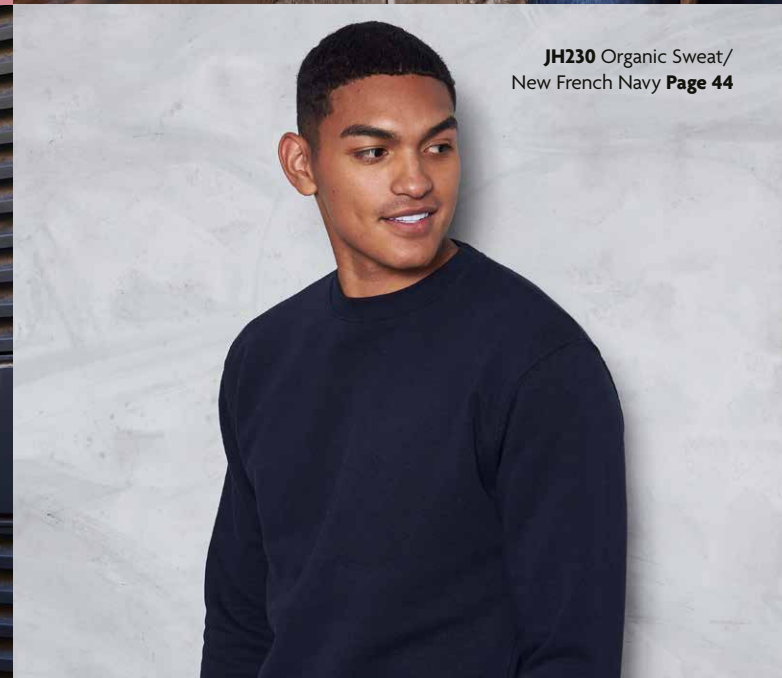
ORGANIC & RECYCLED  
• **SUSTAINABLE** •  
Recycled  
ORGANIC & RECYCLED



JH201J Kids  
Organic Hoodie/  
Burgundy Page 86



JH201 Organic Hoodie/  
White Page 14



JH230 Organic Sweat/  
New French Navy Page 44

IT'S ALL  
ABOUT BEING  
ORGANIC



# CONTENTS

## HOODIES

JH001 College Hoodie <small>NEW COLOURS</small>	page 11
JH001F Women's College Hoodie	page 12
JH201 Organic Hoodie <small>ORGANIC</small>	page 14
JH002 SupaSoft Hoodie	page 15
JH003 Varsity Hoodie	page 17
JH004 Electric Hoodie	page 18
JH005 Women's Longline Hoodie	page 19
JH008 Heather Hoodie	page 19
JH006 Sports Polyester Hoodie	page 20
JH009 Baseball Hoodies	page 21
JH011 Epic Print Hoodie	page 22
JH012 Cosmic Blend Hoodie	page 23
JH013 Superbright Hoodie	page 23
JH014 Camo Hoodie	page 24
JH015 Hoodie Dress	page 25
JH016 Women's Cropped Hoodie	page 26
JH017 Surf Hoodie	page 27
JH018 Nautical Stripe Hoodie	page 27
JH019 Distressed Hoodie	page 28
JH020 Street Hoodie	page 28
JH021 Cross Neck Hoodie <small>NEW COLOURS</small>	page 30
JH022 Tie-Dye Hoodie <small>NEW STYLE</small>	page 32
JH090 Washed Hoodie	page 34
JH100 Chunky Hoodie	page 35
JH101 Graduate Heavyweight Hoodie	page 36
JH103 Game Day Hoodie	page 37

## SWEATS

JH030 AWDIs Sweat <small>NEW COLOURS</small>	page 41
JH030F Women's AWDIs Sweat <small>NEW STYLE</small>	page 42
JH230 Organic Sweat <small>ORGANIC</small>	page 44
JH033 Baseball Sweat	page 45
JH035 Women's Cropped Sweat	page 46
JH036 Women's Fashion Sweat	page 47
JH038 Colour Block Sweat	page 47
JH037 Women's Cropped ¼ Zip Sweat <small>NEW STYLE</small>	page 48
JH046 Sophomore ¼ Zip Sweat	page 50
JH047 Fresher Full Zip Sweat	page 51
JH093 Washed Sweat	page 52
JH030 Graduate Heavyweight Sweat	page 53

## JACKETS

JH043 Varsity Jacket	page 56
JH041 College Jacket	page 58
JH049 Varsity Puffer Jacket	page 59

## ZOODIES

JH050 Zoodie	page 62
JH250 Organic Zoodie <small>ORGANIC</small>	page 64
JH051 Urban Varsity Zoodie	page 65
JH052 Chunky Zoodie	page 66
JH053 Varsity Jacket	page 67
JH055 Women's Zoodie	page 68
JH057 Sleeveless Zoodie	page 69
JH058 Heather Zoodie	page 69
JH059 Retro Zoodie	page 70
JH063 Baseball Zoodie	page 71
JH065 Women's Fashion Cropped Zoodie	page 72
JH066 Sports Polyester Zoodie	page 74
JH150 Graduate Heavyweight Zoodie	page 75

## PANTS & SHORTS

JH072 College Cuffed Jogpant <small>NEW COLOURS</small>	page 78
JH074 Tapered Track Pant	page 80
JH080 Campus Shorts	page 80
JH077 Women's Tapered Track Pant	page 81

## KIDS

JH001J Kids Hoodie	page 84
JH201J Kids Organic Hoodie <small>ORGANIC</small>	page 86
JH003J Kids Varsity Hoodie	page 87
JH004J Kids Electric Hoodie	page 88
JH006J Kids Sports Polyester Hoodie	page 88
JH030J Kids AWDIs Sweat <small>NEW COLOURS</small>	page 89
JH009J Kids Baseball Hoodie	page 90
JH014J Kids Camo Hoodie	page 91
JH043J Kids Varsity Jacket	page 92
JH050J Kids Zoodie	page 93
JH072J Kids Cuffed Jogpant	page 94
JH074J Kids Tapered Track Pant	page 95

## GUIDES

Print Guide	page 96
Core Colour Guide	page 98
Contrast Colour Guide	page 100
Our fabrics	page 102
PMS Colour Guide	page 103
Fit Guide	page 104
Connect Complementary styles	page 106



JH001 College Hoodie/Caramel Latte Page 11  
 JH001F Womens College Hoodie/Ash Page 12  
 JH001 College Hoodie/Ginger Biscuit Page 11





JH001 College Hoodie/Mustard Page 11  
JH001F College Hoodie/Jade Page 12



JH001 College Hoodie/  
Pumpkin Pie Page 11

## HOODIES

JH001 College Hoodie <small>NEW COLOURS</small>	page 11
JH001F Women's College Hoodie	page 12
JH201 Organic Hoodie <small>ORGANIC</small>	page 14
JH002 SupaSoft Hoodie	page 15
JH003 Varsity Hoodie	page 17
JH004 Electric Hoodie	page 18
JH005 Women's LongLine Hoodie	page 19
JH008 Heather Hoodie	page 19
JH006 Sports Polyester Hoodie	page 20
JH009 Baseball Hoodies	page 21
JH011 Epic Print Hoodie	page 22
JH012 Cosmic Blend Hoodie	page 23
JH013 Superbright Hoodie	page 23
JH014 Camo Hoodie	page 24
JH015 Hoodie Dress	page 25
JH016 Women's Cropped Hoodie	page 26
JH017 Surf Hoodie	page 27
JH018 Nautical Stripe Hoodie	page 27
JH019 Distressed Hoodie	page 28
JH020 Street Hoodie	page 28
JH021 Cross Neck Hoodie <small>NEW COLOURS</small>	page 31
JH022 Tie-Dye Hoodie <small>NEW STYLE</small>	page 33
JH090 Washed Hoodie	page 34
JH100 Chunky Hoodie	page 35
JH101 Graduate Heavyweight Hoodie	page 36
JH103 Game Day Hoodie	page 37



JH001 College Hoodie/Caramel Latte Page 11  
JH001 College Hoodie/Peppermint Page 11  
JH001 College Hoodie/Deep Sea Blue Page 11  
JH001 College Hoodie/Dusty Rose Page 11



JH022 Tie-Dye Hoodie/  
Pastel Sunset Dip Page 33  
JH022 Tie-Dye Hoodie/  
Grey Pink Marble Page 33

# MUST HAVE HOODIES







**JH001F** XS-XXL  
WOMEN'S  
COLLEGE HOODIE

**Key Features**

- 33 great colours
- Brushed inner fleece
- Double fabric hood

**Specification**

- 80% Ringspun Cotton / 20% Polyester
- 52% Ringspun Cotton / 48% Polyester (Charcoal)
- 75% Ringspun Cotton / 25% Polyester (Heather Grey)

**Fabric Weight**

- 280gsm
- Mens sizes **pg.11**
- Kids sizes **pg.84**







Baby Pink

New French Navy

## JH002 XS-XXL SUPASOFT HOODIE

### Key Features

- Twin needle stitching detail
- 3 panel double fabric hood
- Soft feel peached Cotton faced fabric

### Specification

- 80% Ringspun Cotton / 20% Polyester
- 52% Ringspun Cotton / 48% Polyester (Charcoal)
- 75% Ringspun Cotton / 25% Polyester (Heather Grey)

### Fabric Weight

- 280gsm



Supa Navy



Arctic White

## JH201 XS-3XL ORGANIC HOODIE

### Key Features

- 12 great colours
- Twin needle stitching detail
- Double fabric hood

### Specification

- 80% Organic Cotton / 20% Recycled Polyester
- 75% Organic Cotton / 25% Recycled Polyester (Heather Grey)

### Fabric Weight

- 280gsm
- Kids sizes **pg.86**



Supa Navy





Burgundy /  
Charcoal



Purple /  
Sun Yellow

Sky Blue  
/ Arctic  
White

# THE HOODIE STYLE

## JH003 XS-5XL\* VARSITY HOODIE

### Key Features

- 47 great colours
- Twin needle stitching detail
- Double fabric hood
- Kangaroo pouch pocket

### Specification

- 80% Ringspun Cotton / 20% Polyester
- 52% Ringspun Cotton / 48% Polyester (Charcoal)
- 75% Ringspun Cotton / 25% Polyester (Heather Grey)
- 70% Ringspun Cotton / 30% Polyester (Smoke Colours)

### Fabric Weight

- 280gsm
- Kids sizes **pg.87**

\*All colours available in S-XXL  
– available in XS, 3XL and 5XL  
on selected colours

Arctic White French Navy	Heather Grey Sapphire Blue	Heather Grey Jet Black	Heather Grey French Navy	Heather Grey Fire Red	Charcoal Heather Grey	Charcoal Jet Black	Charcoal Burgundy
Charcoal Orange Crush	Jet Black Arctic White	Jet Black Heather Grey	Jet Black Hot Pink	Jet Black Purple	Jet Black Fire Red	Jet Black Orange Crush	Jet Black Gold
Jet Black Sun Yellow	Jet Black Kelly Green	Jet Black Sapphire Blue	Baby Pink Arctic White	Hot Pink Heather Grey	Hot Pink French Navy	Purple Heather Grey	Purple Sun Yellow
Burgundy Charcoal	Burgundy Gold	Burgundy Oxford Navy	Fire Red Arctic White	Fire Red Jet Black	Sun Yellow Fire Red	Desert Sand Vanilla Milkshake	Kelly Green Arctic White
Bottle Green Fire Red	Forest Green Gold	Sky Blue Arctic White	Hawaiian Blue Oxford Navy	Sapphire Blue Heather Grey	Sapphire Blue Orange Crush	Sapphire Blue Lime Green	Royal Blue Arctic White
Royal Blue Sun Yellow	Oxford Navy Candyfloss Pink	Oxford Navy Sun Yellow	Oxford Navy Hawaiian Blue	New French Navy Heather Grey	New French Navy Fire Red	New French Navy Sky Blue	





Electric Yellow



Heather Grey

## JH005 XS-XL WOMEN'S LONGLINE HOODIE

### Key Features

- Women's fit
- Twin needle stitching detail
- Three panel double fabric hood

### Specification

- 80% Ringspun Cotton / 20% Polyester
- 75% Ringspun Cotton / 25% Polyester (Heather Grey)

### Fabric Weight

- 280gsm



Heather Grey

Jet Black



Electric Orange

## JH004 S-XXL ELECTRIC HOODIE

### Key Features

- Vibrant eye catching colours
- Twin needle stitching detail
- Flat lace drawcords

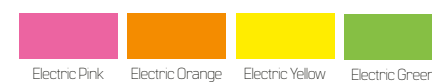
### Specification

- 85% Polyester / 15% Ringspun Cotton

### Fabric Weight

- 280gsm

- Kids sizes **pg.88**



Electric Pink

Electric Orange

Electric Yellow

Electric Green

## JH008 S-XXL HEATHER HOODIE

### Key Features

- Slim fit lightweight hoodie
- Soft feel lightweight fabric
- Twin needle stitching detail

### Specification

- 52% Ringspun Cotton / 48% Polyester

### Fabric Weight

- 225gsm



Black Heather

Navy Heather



Navy Heather





**JH006** S-3XL  
SPORTS  
POLYESTER HOODIE

**Key Features**

- Sporty fit
- Twin needle stitching detail
- Double fabric hood

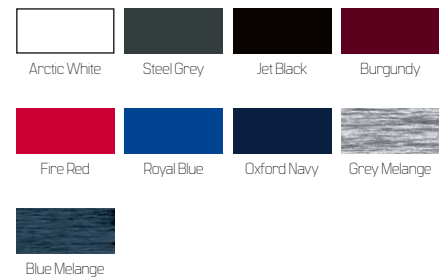
**Specification**

- 100% Polyester

**Fabric Weight**

- 200gsm

- Kids sizes **pg.88**



**JH009** S-XXL  
BASEBALL HOODIE

**Key Features**

- Twin needle stitching detail
- Contrast raglan sleeves and drawcords
- Contrast double fabric hood

**Specification**

- 80% Ringspun Cotton / 20% Polyester
- 52% Ringspun Cotton / 48% Polyester (Charcoal)
- 75% Ringspun Cotton / 25% Polyester (Heather Grey)
- 70% Ringspun Cotton / 30% Polyester (Camo Colours)

**Fabric Weight**

- 280gsm

- Kids sizes **pg.90**





# JH011 XS-3XL

## EPIC PRINT HOODIE

### Key Features

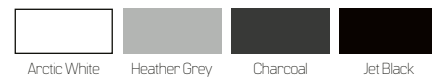
- Twin needle stitching detail
- Two panel double fabric hood
- No pocket for maximum print surface area

### Specification

- 80% Ringspun Cotton / 20% Polyester
- 52% Ringspun Cotton / 48% Polyester (Charcoal)
- 75% Ringspun Cotton / 25% Polyester (Heather Grey)

### Fabric Weight

- 280gsm



Charcoal



Charcoal



Cosmic Red / Black

# JH012 XS-XXL

## COSMIC BLEND HOODIE

### Key Features

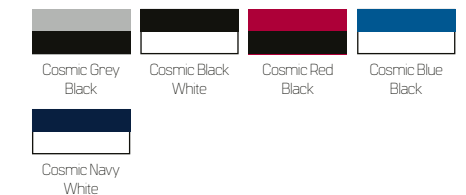
- Twin needle stitching detail
- Double fabric hood
- All over melange effect fabric

### Specification

- 70% Ringspun Cotton / 30% Polyester

### Fabric Weight

- 280gsm



# JH013 S-XXL

## SUPERBRIGHT HOODIE

### Key Features

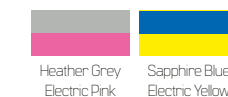
- Twin needle stitching detail
- Double fabric hood with contrast inner in electric colours

### Specification

- 80% Ringspun Cotton / 20% Polyester (Body)
- 80% Polyester / 20% Ringspun Cotton (Hood Lining)
- 75% Ringspun Cotton / 25% Polyester (Heather Grey)

### Fabric Weight

- 280gsm



Sapphire Blue / Electric Yellow





Grey Camo



Green Camo

# STYLE SETTER

## JH015 XS-XXL HOODIE DRESS

### Key Features

- Women's relaxed fit
- Longline cut design
- Double fabric hood

### Specification

- 80% Ringspun Cotton / 20% Polyester
- 75% Ringspun Cotton / 25% Polyester (Heather Grey)

### Fabric Weight

- 280gsm



Heather Grey

Jet Black



Jet Black



Green Camo

## JH014 XS-XXL CAMO HOODIE

### Key Features

- Twin needle stitching detail
- Classic all over camouflage print design
- Double fabric hood

### Specification

- 70% Ringspun Cotton / 30% Polyester

### Fabric Weight

- 280gsm
- Kids sizes **pg.91**



Grey Camo

Black Camo

Red Camo

Green Camo



Blue Camo



# STYLISH CROP

## JH016 XXS-XL WOMEN'S CROPPED HOODIE

### Key Features

- Women's relaxed fit
- Cropped cut with drop shoulder design
- Twin needle stitching detail
- Raw edge hem with cover stitching

### Specification

- 80% Ringspun Cotton / 20% Polyester
- 75% Ringspun Cotton / 25% Polyester (Heather Grey)

### Fabric Weight

- 280gsm



## JH017 XS-3XL SURF HOODIE

### Key Features

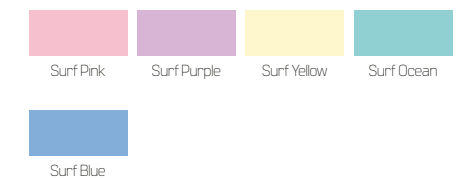
- Twin needle stitching detail
- Melange effect fabric
- Relaxed fit
- Double fabric hood

### Specification

- 80% Ringspun Cotton / 20% Polyester

### Fabric Weight

- 280gsm



## JH018 XS-XXL NAUTICAL STRIPE HOODIE

### Key Features

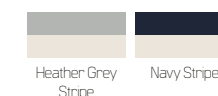
- Stripe design
- French terry
- Relaxed fit
- Double fabric hood

### Specification

- 80% Ringspun Cotton / 20% Polyester (Navy Stripe)
- 90% Cotton / 10% Viscose (Heather Grey Stripe)

### Fabric Weight

- 280gsm







## JH019 S-XXL DISTRESSED HOODIE

### Key Features

- Distressed finish
- French Terry
- Double fabric hood

### Specification

- 80% Ringspun Cotton / 20% Polyester (Jet Black)
- 70% Cotton / 27% Polyester / 3% Viscose (Heather Grey)

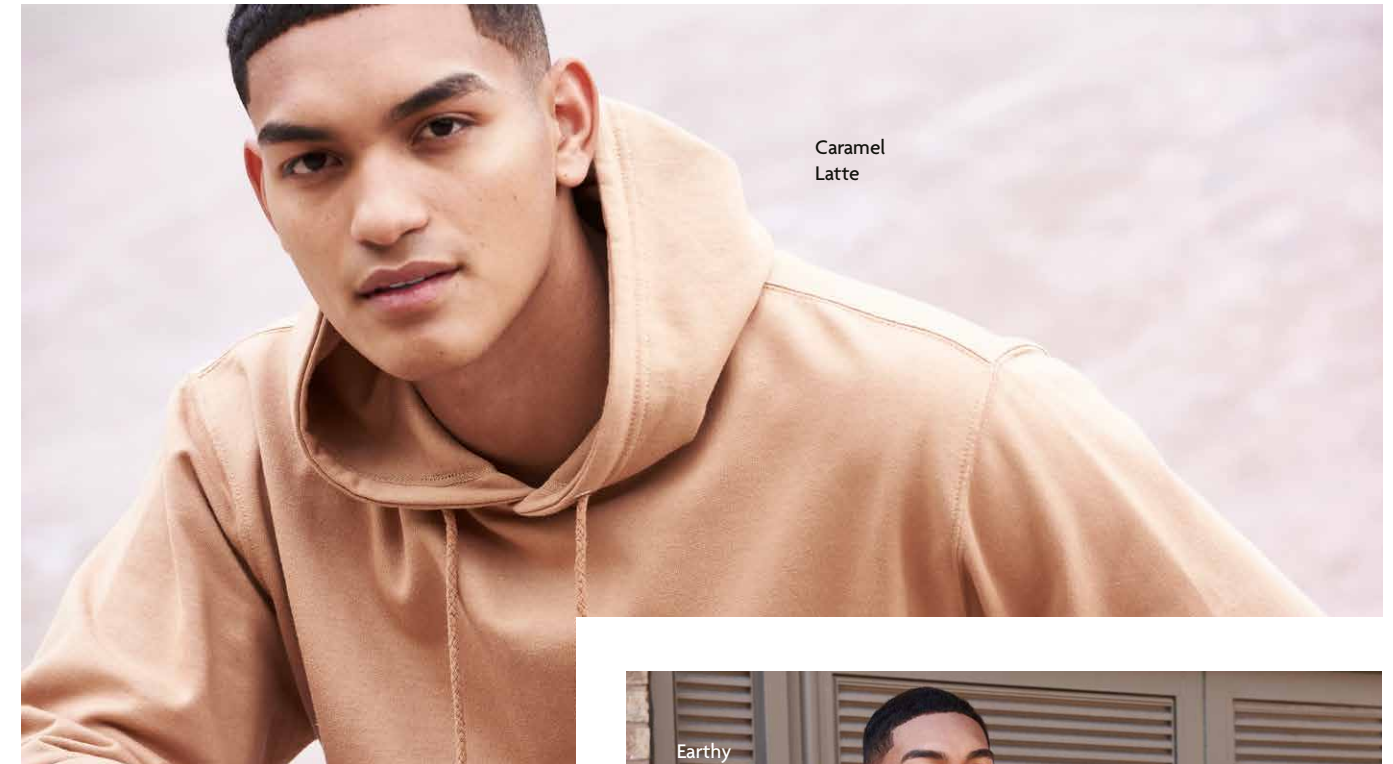
### Fabric Weight

- 280gsm



Heather Grey Jet Black

# 5 NEW TREND LED COLOURS FOR 2022



Caramel Latte

## JH020 S-XXL STREET HOODIE

### Key Features

- Heavyweight hoodie
- Twin needle stitching detail
- Three panel double fabric hood
- Thumb holes in the cuffs

### Specification

- 70% Ringspun Cotton / 30% Polyester
- 52% Ringspun Cotton / 48% Polyester (Charcoal)
- 65% Ringspun Cotton / 35% Polyester (Heather Grey)

### Fabric Weight

- 330gsm



Heather Grey Charcoal Jet Black Fire Red



Red Hot Chili New French Navy



New French Navy

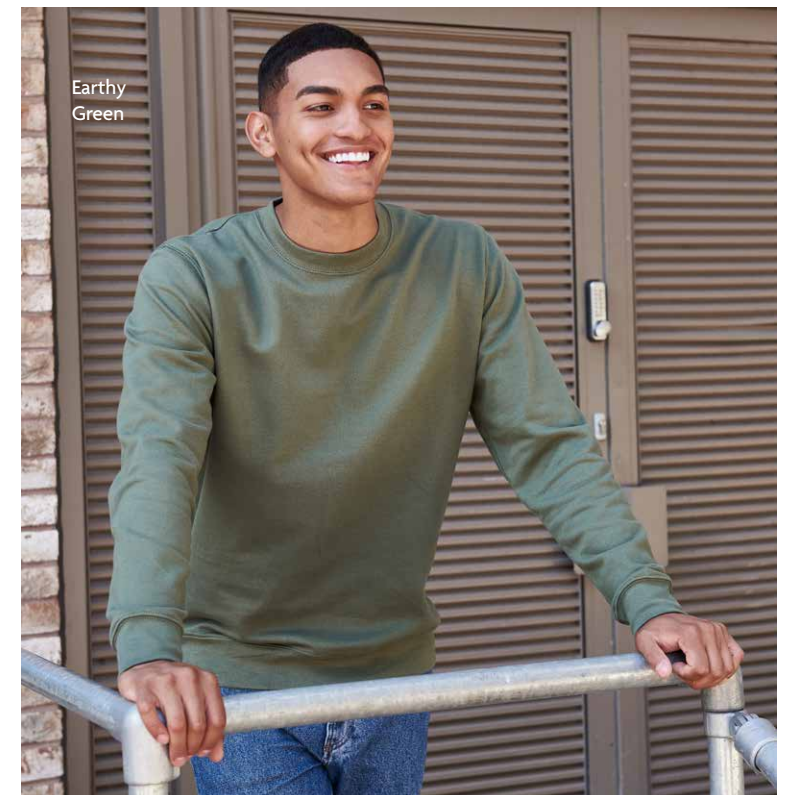


Dusty Rose

Ginger Biscuit



Pumpkin Pie



Earthy Green



Ginger Biscuit Pumpkin Pie Caramel Latte Earthy Green Dusty Rose

- JH001 College Hoodie/Caramel Latte **Page 11**
- JH001 College Hoodie/Pumpkin Pie **page 11**
- JH001 College Hoodie/Dusty Rose **page 11**
- JH001 College Hoodie/Ginger Biscuit **page 11**
- JH030 AWDIs Sweat/Earthy Green **page 41**



**JH021** XS-XXL\*  
**CROSS NECK**  
**HOODIE**  
**NEW COLOURS**  
**NEW SIZES**

**Key Features**

- Heavyweight hoodie
- Cross over neck detail
- Twin needle stitching detail
- Three panel double fabric hood
- Thumb holes in the cuffs

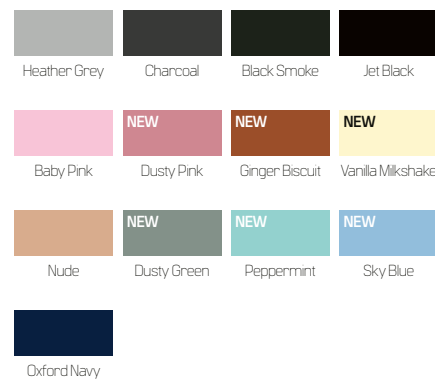
**Specification**

- 70% Ringspun Cotton / 30% Polyester
- 52% Ringspun Cotton / 48% Polyester (Charcoal)
- 65% Ringspun Cotton / 35% Polyester (Heather Grey)
- 65% Ringspun Cotton / 35% Polyester (Black Smoke)

**Fabric Weight**

- 330gsm

\*All colours now available from XS



# GET COMFORTABLE IN HOODS







Tie-Dye Swirl

**JH022** XS-XXL  
TIE-DYE HOODIE  
**NEW STYLE**

**Key Features**

- Relaxed fit
- Twin needle stitching detail
- Double fabric hood with round drawcords
- Kangaroo pouch pocket

**Specification**

- 80% Ringspun Cotton / 20% Polyester

**Fabric Weight**

- 280gsm

Due to the unique method of dying some variation in colour may occur



Blue Cloud

Grey Pink Marble

Tie-Dye Swirl

Pastel Sunset Dip



Blue Cloud



**NEW  
STYLE**

Grey Pink  
Marble

Pastel  
Sunset Dip

**TIE-DYE STYLE**





Washed Charcoal

# VINTAGE WASH

## JH100 XS-XXL CHUNKY HOODIE

### Key Features

- Pull over hoodie
- Side panels for stylish fit
- Overlock stitching detail throughout
- Double fabric hood with heather grey waffle fabric inner
- Side pockets

### Specification

- 80% Ringspun Cotton / 20% Polyester
- 52% Ringspun Cotton / 48% Polyester (Charcoal)
- 75% Ringspun Cotton / 25% Polyester (Heather Grey)

### Fabric Weight

- 400gsm



Jet Black

JH074 Tapered Track Pant/  
Heather Grey **Page 80**



Washed Purple

## JH090 XS-3XL WASHED HOODIE

### Key Features

- Washed effect
- Soft touch
- Twin needle stitching detail
- Double fabric hood

### Specification

- 55% Ringspun Cotton / 45% Polyester

### Fabric Weight

- 280gsm



Jet Black





New French Navy

## JH101 XS-3XL GRADUATE HEAVYWEIGHT HOODIE

### Key Features

- Heavyweight hoodie
- Twin needle stitching detail
- 3 panel fabric hood with single jersey fabric inner

### Specification

- 70% Ringspun Cotton / 30% Polyester
- 45% Ringspun Cotton / 55% Polyester (Charcoal)
- 65% Ringspun Cotton / 35% Polyester (Heather Grey)

### Fabric Weight

- 330gsm



Arctic White

# GAME DAY READY

## JH103 XS-3XL GAME DAY HOODIE

### Key Features

- Heavyweight Hoodie
- Double fabric hood with single jersey contrast inner
- Twin needle stitching detail

### Specification

- 70% Ringspun Cotton / 30% Polyester
- 65% Ringspun Cotton / 35% Polyester (Heather Grey)

### Fabric Weight

- 330gsm



New French Navy / Heather Grey



New French Navy / Heather Grey

JH074 Tapered Track Pant/Heather Grey  
Page 80





JH030 ADWis Sweat/  
Earthy Green Page 41  
JH030F Women's ADWis  
Sweat/Artic White Page 42



JH030 ADWis Sweat/  
Burgundy Page 41  
JH072 College Cuffed Jogpant/  
Burgundy Page 78

## SWEATS

JH030 AWDIs Sweat <b>NEW COLOURS</b>	page 41
JH030F Women's AWDIs Sweat <b>NEW STYLE</b>	page 42
JH230 Organic Sweat <b>ORGANIC</b>	page 44
JH033 Baseball Sweat	page 45
JH035 Women's Cropped Sweat	page 46
JH036 Women's Fashion Sweat	page 47
JH038 Colour Block Sweat	page 47
JH037 Women's Cropped ¼ Zip Sweat <b>NEW STYLE</b>	page 48
JH046 Sophomore ¼ Zip Sweat	page 50
JH047 Fresher Full Zip Sweat	page 51
JH093 Washed Sweat	page 52
JH030 Graduate Heavyweight Sweat	page 53



JH030F Women's AWDIs  
Sweat Page 42



JH037 Women's  
Cropped ¼ Zip Sweat/  
Dusty Rose Page 48  
JH037 Women's  
Cropped ¼ Zip Sweat/  
Lavender Page 48

**NEW  
STYLE**



JH030 AWDIs Sweat/  
Desert Sand Page 41

**MUST HAVE  
SWEATS**





**JH030** XS-5XL\*  
 AWDIs SWEAT  
**NEW COLOURS**  
**NEW SIZES**

**Key Features**

- 51 great colours
- Set in sleeves
- Stylish fit
- Brushed inner fleece

**Specification**

- 80% Ringspun Cotton / 20% Polyester
- 52% Ringspun Cotton / 48% Polyester (Charcoal)
- 75% Ringspun Cotton / 25% Polyester (Heather Grey)
- 70% Ringspun Cotton / 30% Polyester (Black Smoke)

**Fabric Weight**

- 280gsm
- Women's sizes **pg.42**
- Kids sizes **pg.89**

\*All colours available in XS-XXL  
 – available in 3XL and 5XL  
 on selected colours

5XL	Ash	5XL	Moon dust Grey	Steel Grey	5XL	Charcoal	Storm Grey	Black Smoke				
Arctic White	Heather Grey	Jet Black	Deep Black	5XL	Baby Pink	Dusty Pink	NEW	Dusty Rose	Candyfloss Pink	Hot Pink	3XL	Cranberry
NEW	Lavender	3XL	Purple	Plum	5XL	Burgundy	5XL	Fire Red	Red Hot Chili	Burnt Orange	NEW	Ginger Biscuit
NEW	Pumpkin Pie	Orange Crush	NEW	Mustard	Gold	Sun Yellow	Vanilla Milkshake	Nude	NEW	Desert Sand		
NEW	Caramel Latte	Hot Chocolate	Lime Green	Kelly Green	NEW	Earthy Green	NEW	Dusty Green	Olive Green	Bottle Green		
Forest Green	Peppermint	Jade	Sky Blue	Turquoise Surf	Hawaiian Blue	5XL	Sapphire Blue	3XL	Royal Blue			
Airforce Blue	Oxford Navy	5XL	New French Navy									



**JH030F** XS-XXL

WOMEN'S  
AWDis SWEAT

**NEW STYLE**

**Key Features**

- Crew neckline
- Soft cotton face
- Brushed inner fleece
- Ribbed cuffs and hem

**Specification**

- 80% Ringspun Cotton / 20% Polyester
- 75% Ringspun Cotton / 25% Polyester (Heather Grey)

**Fabric Weight**

- 280gsm
- Mens sizes **pg.41**
- Kids sizes **pg.89**



**NEW  
STYLE**

Arctic White

**QUALITY SWEATS**





New French Navy

## JH230 XS-XXL ORGANIC SWEAT

### Key Features

- Crew neck sweat
- Set in sleeves
- Taped neck
- Stylish fit

### Specification

- 80% Organic Cotton / 20% Recycled Polyester
- 75% Organic Cotton / 25% Recycled Polyester (Heather Grey)

### Fabric Weight

- 280gsm



# MATCH READY

## JH033 S-XXL BASEBALL SWEAT

### Key Features

- Twin needle stitching detail
- Retro stylish fit
- Contrast raglan sleeves

### Specification

- 80% Ringspun Cotton / 20% Polyester
- 52% Ringspun Cotton / 48% Polyester (Charcoal)
- 75% Ringspun Cotton / 25% Polyester (Heather Grey)

### Fabric Weight

- 280gsm



Burgundy / Charcoal



Burgundy / Charcoal





Dusty Pink



Charcoal

## JH036 XS-XL WOMEN'S FASHION SWEAT

### Key Features

- Twin needle stitching detail
- Scooped rib crew neck
- Women's fit with dropped shoulder

### Specification

- 80% Ringspun Cotton / 20% Polyester
- 52% Ringspun Cotton / 48% Polyester (Charcoal)
- 75% Ringspun Cotton / 25% Polyester (Heather Grey)

### Fabric Weight

- 280gsm



Heather Grey Charcoal Jet Black



Heather Grey

## JH035 XXS-XL WOMEN'S CROPPED SWEAT

### Key Features

- Women's relaxed fit
- Crew neckline
- Cropped cut with drop shoulder design
- Twin needle stitching
- Raw edge hem with cover stitching

### Specification

- 80% Ringspun Cotton / 20% Polyester
- 75% Ringspun Cotton / 25% Polyester (Heather Grey)

### Fabric Weight

- 280gsm



Arctic White Heather Grey Deep Black Dusty Pink

## JH038 XS-XXL COLOUR BLOCK SWEAT

### Key Features

- Crew neck sweat
- Colour block design
- Modern contrast panelling

### Specification

- 80% Ringspun Cotton / 20% Polyester
- 75% Ringspun Cotton / 25% Polyester (Heather Grey)

### Fabric Weight

- 280gsm



Heather Grey / Deep Black Heather Grey / New French Navy



Heather Grey /  
New French Navy



**JH037** XXS-XL  
WOMEN'S CROPPED  
¼ ZIP SWEAT  
**NEW STYLE**

**Key Features**

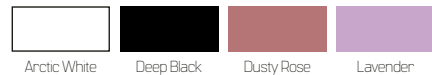
- Funnel neck
- Quarter zip fastening
- Cropped style
- Elasticated hem

**Specification**

- 80% Ringspun Cotton /  
20% Polyester

**Fabric Weight**

- 280gsm



**NEW  
STYLE**







Sapphire Blue

**JH046** S-XXL  
SOPHOMORE  
¼ ZIP SWEAT

**Key Features**

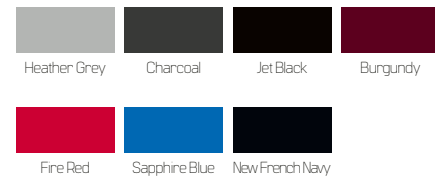
- ¼ zip neck
- Metal YKK zipper and puller

**Specification**

- 80% Ringspun Cotton / 20% Polyester
- 52% Ringspun Cotton / 48% Polyester (Charcoal)
- 75% Ringspun Cotton / 25% Polyester (Heather Grey)

**Fabric Weight**

- 280gsm



Sapphire Blue

**JH047** S-XXL  
FRESHER FULL  
ZIP SWEAT

**Key Features**

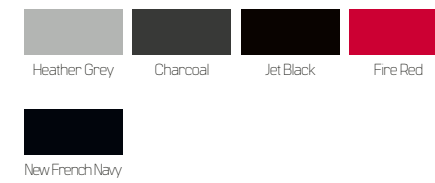
- Full covered zip
- Front pockets
- Metal YKK zipper and puller

**Specification**

- 80% Ringspun Cotton / 20% Polyester
- 52% Ringspun Cotton / 48% Polyester (Charcoal)
- 75% Ringspun Cotton / 25% Polyester (Heather Grey)

**Fabric Weight**

- 280gsm



Heather Grey



Heather Grey





# VINTAGE FRESH

Washed Fire Red

## JH130 XS-3XL GRADUATE HEAVYWEIGHT SWEAT

### Key Features

- Heavyweight sweat
- Twin needle stitching detail
- Raglan sleeves

### Specification

- 70% Ringspun Cotton / 30% Polyester
- 45% Ringspun Cotton / 55% Polyester (Charcoal)
- 65% Ringspun Cotton / 35% Polyester (Heather Grey)

### Fabric Weight

- 330gsm



Burgundy

## JH093 XS-3XL WASHED SWEAT

### Key Features

- Washed effect
- Soft touch
- Set in sleeves
- Twin needle stitching detail
- Stylish fit

52 **JustHoods**

### Specification

- 55% Ringspun Cotton / 45% Polyester

### Fabric Weight

- 280gsm



Burgundy



Arctic White

**JustHoods** 53



JH049 Varsity Puffer Jacket/  
Jet Black/White Page 59



JH049 Varsity Puffer  
Jacket/New French  
Navy/White Page 59



# ALL-ROUND JACKETS

JH043 Varsity Jacket/  
Oxford Navy/White Page 56



JH041 College Jacket/  
Oxford Navy Page 58



## JACKETS

- JH043 Varsity Jacket
- JH041 College Jacket
- JH049 Varsity Puffer Jacket

page 56  
page 58  
page 59



JH043 Varsity Jacket/  
Jet Black/Orange Crush  
Page 56



# JH043 XS-3XL VARSITY JACKET

## Key Features

- Welt contrast pockets
- Taped back neck
- Hanging loop at back neck

## Specification

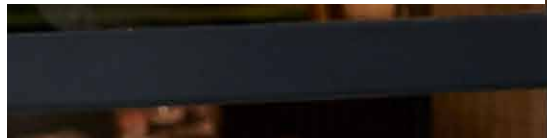
- 70% Ringspun Cotton / 30% Polyester
- 52% Ringspun Cotton / 48% Polyester (Charcoal)
- 65% Ringspun Cotton / 35% Polyester (Heather Grey)

## Fabric Weight

- 330gsm
- Kids sizes **pg.92**

\*All colours available in XS-XXL – available in 3XL on selected colours

		3XL	
Heather Grey White	Charcoal Heather Grey	Jet Black White	Jet Black Charcoal
		3XL	
Jet Black Heather Grey	Jet Black Hot Pink	Jet Black Fire Red	Jet Black Orange Crush
3XL			3XL
Jet Black Sun Yellow	Hot Pink White	Purple White	Burgundy Heather Grey
3XL			
Fire Red White	Kelly Green White	Sapphire Blue Heather Grey	Royal Blue White
3XL			
Oxford Navy White	Oxford Navy Heather Grey	Oxford Navy Burgundy	



# ALL-AMERICAN STYLE





# STAY ON TREND

Oxford Navy

## JH049 XS-XXL VARSITY PUFFER JACKET

### Key Features

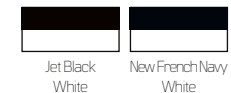
- Contrast set in sleeves
- Fully lined
- Zipped side pockets

### Specification

- Shell: 100% Polyester Pongee, A/C Coated 240T
- Lining: 100% Polyester Taffeta 190T

### Fabric Weight

- 80gsm



Jet Black / White

JH077 Women's Tapered Track Pant/ Jet Black **Page 81**



Oxford Navy

## JH041 XS-XXL COLLEGE JACKET

### Key Features

- Knitted collar, cuffs and waistband with stripe details
- Welt pockets
- Hanging loop at back neck

### Specification

- 80% Ringspun Cotton / 20% Polyester
- 75% Ringspun Cotton / 25% Polyester (Heather Grey)

### Fabric Weight

- 280gsm



New French Navy / White





JH065 Women's Fashion Cropped Zoodie/  
Dusty Green  
Page 72



JH050 Zoodie/  
Burgundy Page 62



JH250 Organic Zoodie/  
Heather Grey Page 64

## ZOODIES

- JH050 Zoodie page 62
- JH250 Organic Zoodie ORGANIC page 64
- JH051 Urban Varsity Zoodie page 65
- JH052 Chunky Zoodie page 66
- JH053 Varsity Jacket page 67
- JH055 Women's Zoodie page 68
- JH057 Sleeveless Zoodie page 69
- JH058 Heather Zoodie page 69
- JH059 Retro Zoodie page 70
- JH063 Baseball Zoodie page 71
- JH065 Women's Fashion Cropped Zoodie page 72
- JH066 Sports Polyester Zoodie page 74
- JH150 Graduate Heavyweight Zoodie page 75



JH050 Zoodie/  
Royal Blue Page 62



JH066 Sports Polyester Zoodie/Oxford Navy/  
Arctic White Page 74

# STYLISH ZOODIE



# JH050 S-5XL\*

## ZOODIE

### Key Features

- Self-fabric covered main zip
- Twin needle stitching detail
- Double fabric hood

### Specification

- 80% Ringspun Cotton/ 20% Polyester
- 52% Ringspun Cotton / 48% Polyester (Charcoal)
- 75% Ringspun Cotton / 25% Polyester (Heather Grey)

### Fabric Weight

- 280gsm
- Kids sizes **pg.93**

\*All colours available in S-XXL – available in 5XL on selected colours



# WEEKEND VIBES









Sapphire Blue

## JH052 S-XXL CHUNKY ZOODIE

### Key Features

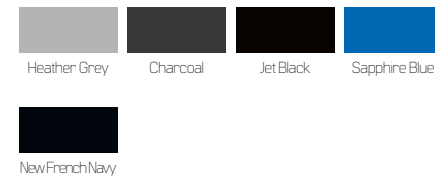
- Side panels for stylish fit
- Brass zip covered with chunky rib detail
- Overlock stitching detail throughout
- Double fabric hood with heather grey waffle fabric inner

### Specification

- 80% Ringspun Cotton / 20% Polyester
- 52% Ringspun Cotton / 48% Polyester (Charcoal)
- 75% Ringspun Cotton / 25% Polyester (Heather Grey)

### Fabric Weight

- 400gsm



Heather Grey

## JH053 S-XXL VARSITY ZOODIE

### Key Features

- Twin needle stitching detail
- Double fabric hood with contrast inner

### Specification

- 80% Ringspun Cotton / 20% Polyester
- 52% Ringspun Cotton / 48% Polyester (Charcoal)
- 75% Ringspun Cotton / 25% Polyester (Heather Grey)

### Fabric Weight

- 280gsm



Burgundy /  
Charcoal



Royal Blue /  
Arctic White



Burgundy /  
Charcoal





Fire Red



Oxford Navy

## JH057 S-XXL SLEEVELESS ZOODIE

### Key Features

- Sleeveless zipped hoodie with metal YKK zip
- Twin needle stitching detail
- Double fabric hood

### Specification

- 80% Ringspun Cotton / 20% Polyester
- 52% Ringspun Cotton / 48% Polyester (Charcoal)
- 75% Ringspun Cotton / 25% Polyester (Heather Grey)

### Fabric Weight

- 280gsm



Fire Red

## JH055 XS-XL WOMEN'S ZOODIE

### Key Features

- Women's fit
- Covered main plastic zip
- Twin needle stitching detail
- Double fabric hood

### Specification

- 80% Ringspun Cotton / 20% Polyester
- 75% Ringspun Cotton / 25% Polyester (Heather Grey)

### Fabric Weight

- 280gsm



## JH058 XS-XXL HEATHER ZOODIE

### Key Features

- Soft feel lightweight fabric
- Slim fit
- Twin needle stitching detail

### Specification

- 52% Ringspun Cotton / 48% Polyester

### Fabric Weight

- 225gsm



Red Heather



# JH059 XS-XXL

## RETRO ZOODIE

### Key Features

- Full zip hoodie with metal YKK zip
- Slim fit
- Twin needle stitching detail
- Double fabric hood

### Specification

- 80% Ringspun Cotton / 20% Polyester
- 52% Ringspun Cotton / 48% Polyester (Charcoal)

### Fabric Weight

- 280gsm



Charcoal Grey / Jet Black   Charcoal Grey / Burgundy   Charcoal Grey / Oxford Navy



Charcoal Grey / Burgundy

JH072 College Cuffed Jogpant / Burgundy **Page 78**



Charcoal Grey / Burgundy

# JH063 S-XXL

## BASEBALL ZOODIE

### Key Features

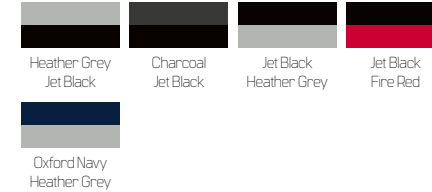
- Twin needle stitching detail
- Double fabric hood
- YKK Plastic zip

### Specification

- 80% Ringspun Cotton / 20% Polyester
- 52% Ringspun Cotton / 48% Polyester (Charcoal)
- 75% Ringspun Cotton / 25% Polyester (Heather Grey)

### Fabric Weight

- 280gsm



Heather Grey / Jet Black   Charcoal / Jet Black   Jet Black / Heather Grey   Jet Black / Fire Red  
Oxford Navy / Heather Grey



Jet Black / Fire Red



Oxford Navy / Heather Grey



Oxford Navy / Heather Grey



**JH065** XXS-XL  
WOMEN'S FASHION  
CROPPED ZOODIE

**Key Features**

- Women's relaxed fit
- Cropped cut with drop shoulder design
- Full front Metal YKK Zip
- Twin needle stitching detail

**Specification**

- 80% Ringspun Cotton / 20% Polyester
- 75% Ringspun Cotton / 25% Polyester (Heather Grey)

**Fabric Weight**

- 280gsm



Dusty Pink

Dusty Green





# GET READY GET SET

Fire Red /  
Jet Black

## JH150 XS-3XL GRADUATE HEAVYWEIGHT ZOODIE

### Key Features

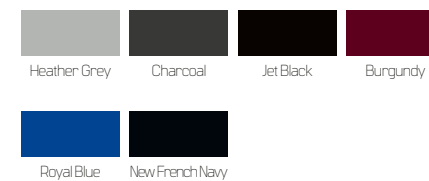
- 3 panel fabric hood with single jersey fabric inner
- Heavyweight zoodie
- Plastic YKK zipper and puller with chin protector

### Specification

- 70% Ringspun Cotton / 30% Polyester
- 45% Ringspun Cotton / 55% Polyester (Charcoal)
- 65% Ringspun Cotton / 35% Polyester (Heather Grey)

### Fabric Weight

- 330gsm



Heather Grey



Oxford Navy /  
Arctic White

## JH066 S-3XL SPORTS POLYESTER ZOODIE

### Key Features

- Sporty fit
- Full zip hoodie with contrast plastic zip
- Twin needle stitching detail
- Raglan sleeves with contrast panel
- Three panel hood with contrast inner

### Specification

- 100% Polyester

### Fabric Weight

- 200gsm



New French  
Navy



New French  
Navy





JH072 College Cuffed Jogpant/ Arctic White Page 78



JH080 Campus Shorts/ Burgundy Page 80



JH049 Varsity Puffer Jacket/ Jet Black/ White Page 59  
JH077 Women's Tapered Track Pant/ Jet Black Page 81

# COSY STYLE PANTS



JH074 Tapered Track Pant/ Green Camo Page 80



JH030 ADWis Sweat/ Burgundy Page 41  
JH072 College Cuffed Jogpant/ Burgundy Page 78

## PANTS & SHORTS

- JH072 College Cuffed Jogpant **NEW COLOURS** page 78
- JH074 Tapered Track Pant page 80
- JH080 Campus Shorts page 80
- JH077 Women's Tapered Track Pant page 81



**JH072** S-XXL  
COLLEGE  
CUFFED JOGPANT  
**NEW COLOURS**

**Key Features**

- Elasticated waist with white inner drawcords
- Side pockets

**Specification**

- 80% Ringspun Cotton / 20% Polyester
- 52% Ringspun Cotton / 48% Polyester (Charcoal)
- 75% Ringspun Cotton / 25% Polyester

**Fabric Weight**

- 280gsm
- Kids sizes **pg.94**



# CASUAL AND STYLISH

Burgundy







Green Camo

## JH074 S-XXL TAPERED TRACK PANT

### Key Features

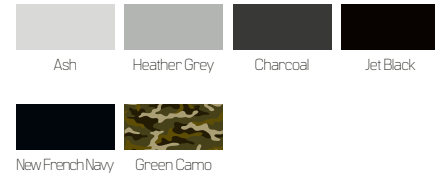
- Modern tapered slim fit
- Front pockets
- Elasticated waistband with outer drawcords

### Specification

- 80% Ringspun Cotton / 20% Polyester
- 52% Ringspun Cotton / 48% Polyester (Charcoal)
- 75% Ringspun Cotton / 25% Polyester (Heather Grey)
- 70% Ringspun Cotton / 30% Polyester (Green Camo)

### Fabric Weight

- 280gsm
- Kids sizes **pg.95**



## JH077 XS-XL WOMEN'S TAPERED TRACK PANT

### Key Features

- Modern tapered slim fit
- Front pockets with YKK zips
- Elasticated waistband with outer drawcords

### Specification

- 96% Ringspun Cotton / 4% Elastane
- 85% Ringspun Cotton / 11% Polyester / 4% Elastane (Heather Grey)

### Fabric Weight

- 280gsm



JH053 Varsity Jacket/  
Burgundy Page 67

Jet Black

## JH080 S-XXL CAMPUS SHORTS

### Key Features

- Heavyweight shorts
- Side pockets
- Single back patch pocket

### Specification

- 70% Ringspun Cotton / 30% Polyester
- 52% Ringspun Cotton / 48% Polyester (Charcoal)
- 65% Ringspun Cotton / 35% Polyester (Heather Grey)

### Fabric Weight

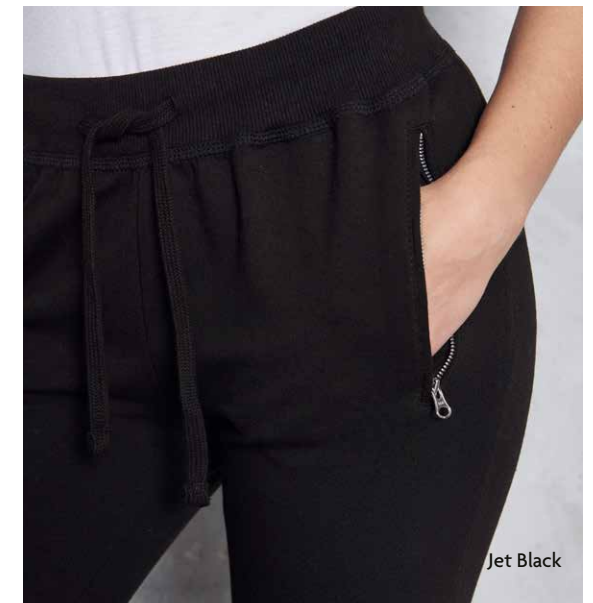
- 330gsm



Burgundy



Jet Black



Jet Black





JH001J Kids Hoodie/  
Arctic White Page 84



JH001J Kids Hoodie/  
Fire Red Page 84

# COOL AND COMFY



JH030J Kids ADWIs Sweat/  
Desert Sand Page 89

JH030J Kids ADWIs Sweat/  
Dusty Pink Page 89



JH050J Kids Zoodie/  
Burgundy Page 93

JH050J Kids Zoodie/  
Oxford Navy Page 93

## KIDS

- JH001J Kids Hoodie page 84
- JH201J Kids Organic Hoodie **ORGANIC** page 86
- JH003J Kids Varsity Hoodie page 87
- JH004J Kids Electric Hoodie page 88
- JH006J Kids Sports Polyester Hoodie page 88
- JH030J Kids AWDIs Sweat **NEW COLOURS** page 89
- JH009J Kids Baseball Hoodie page 90
- JH014J Kids Camo Hoodie page 91
- JH043J Kids Varsity Jacket page 92
- JH050J Kids Zoodie page 93
- JH072J Kids Cuffed Jogpants page 94
- JH074J Kids Tapered Track Pant page 95



# JH001J XXS-XL KIDS HOODIE

## Key Features

- Double fabric hood
- Twin needle stitching detail
- No drawcords – to comply to EU regulation

## Specification

- 80% Ringspun Cotton / 20% Polyester
- 52% Ringspun Cotton / 48% Polyester (Charcoal)
- 75% Ringspun Cotton / 25% Polyester (Heather Grey)

## Fabric Weight

- 280gsm
- Mens sizes **pg.11**
- Women's sizes **pg.12**



# EVERYDAY VIBES







ORGANIC & RECYCLED  
**• SUSTAINABLE •**  
 Organic Recycled

## JH003J XS-XL KIDS VARSITY HOODIE

### Key Features

- Twin needle stitching detail
- Double fabric hood with contrast inner
- No drawcords – to comply with EU regulation

### Specification

- 80% Ringspun Cotton / 20% Polyester
- 52% Ringspun Cotton / 48% Polyester (Charcoal)
- 75% Ringspun Cotton / 25% Polyester (Heather Grey)

### Fabric Weight

- 280gsm
- Adults sizes **pg.17**



## JH201J XXS-XL KIDS ORGANIC HOODIE

### Key Features

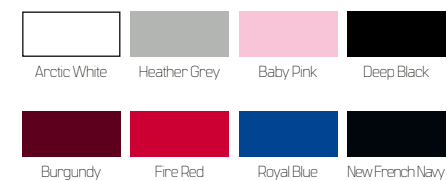
- Twin needle stitching detail
- Double fabric hood
- No drawcords – to comply with EU regulation
- Kangaroo pouch pocket

### Specification

- 80% Organic Cotton / 20% Recycled Polyester
- 75% Organic Cotton / 25% Recycled Polyester (Heather Grey)

### Fabric Weight

- 280gsm
- Adult sizes **pg.14**







## JH004J XS-XL KIDS ELECTRIC HOODIE

### Key Features

- Vibrant eye-catching colours
- Twin needle stitching detail
- No drawcords – to comply with EU regulation

### Specification

- 85% Polyester / 15% Ringspun Cotton

### Fabric Weight

- 280gsm
- Adult sizes **pg.18**



## JH006J XS-XL KIDS SPORTS POLYESTER HOODIE

### Key Features

- Sporty fit
- Twin needle stitching detail
- Three panel double fabric hood
- Straight hem
- No drawcords – to comply with EU regulation

### Specification

- 100% Polyester

### Fabric Weight

- 200gsm
- Adult sizes **pg.20**



## JH030J XXS-XL\* KIDS AWDIs SWEAT NEW COLOURS NEW SIZES

### Key Features

- 27 great colours
- Set in sleeves
- Stylish fit
- Brushed inner fleece

### Specification

- 80% Ringspun Cotton / 20% Polyester
- 52% Ringspun Cotton / 48% Polyester (Charcoal)
- 75% Ringspun Cotton / 25% Polyester (Heather Grey)

### Fabric Weight

- 280gsm
- Mens sizes **pg.41**
- Women's sizes **pg.42**

\*All sizes start at XXS except Forest Green







Oxford Navy / Heather Grey

## JH009J XS-XL KIDS BASEBALL HOODIE

### Key Features

- Twin needle stitching detail
- Contrast raglan sleeves
- Double fabric hood
- No drawcords – to comply with EU regulation

### Specification

- 80% Ringspun Cotton / 20% Polyester
- 52% Ringspun Cotton / 48% Polyester (Charcoal)
- 75% Ringspun Cotton / 25% Polyester (Heather Grey)

### Fabric Weight

- 280gsm
- Adult sizes **pg.21**



Jet Black / Fire Red

JH072J Kids Cuffed Jogpants/  
New French Navy Page 94

## JH014J XS-XXL KIDS CAMO HOODIE

### Key Features

- Twin needle stitching detail
- Classic all over camouflage print design
- Double fabric hood
- No drawcords – to comply with EU regulation

### Specification

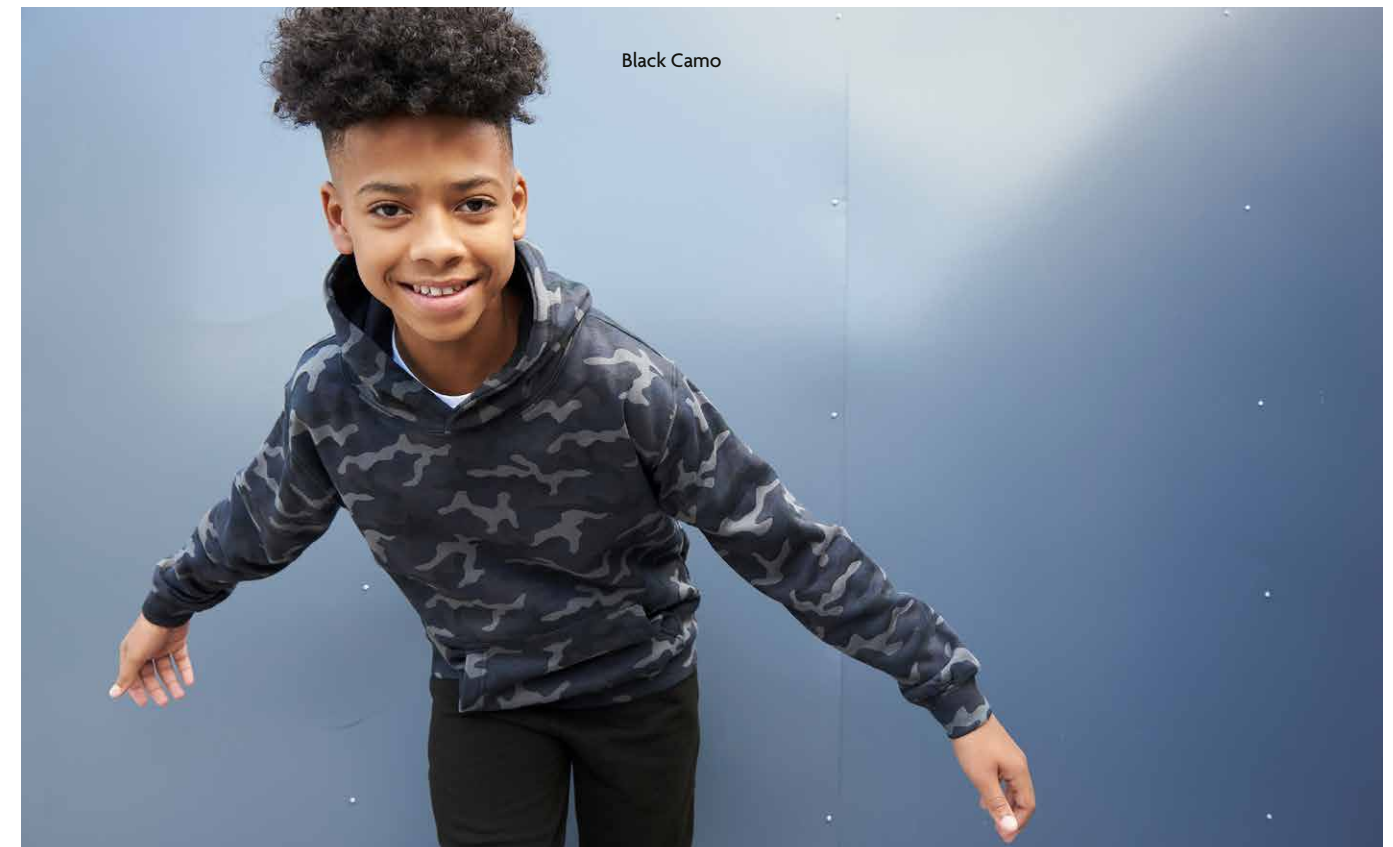
- 70% Ringspun Cotton / 30% Polyester

### Fabric Weight

- 280gsm
- Adult sizes **pg.24**



Green Camo



Black Camo





# VARSITY READY

Oxford Navy / Heather Grey

## JH050J XS-XL KIDS ZOODIE

### Key Features

- Self-fabric covered main zip
- Twin needle stitching detail
- Double fabric hood
- No drawcords – to comply with EU regulation

### Specification

- 80% Ringspun Cotton / 20% Polyester
- 75% Ringspun Cotton / 25% Polyester (Heather Grey)

### Fabric Weight

- 280gsm
- Adult sizes **pg.62**



Burgundy

Oxford Navy



Hot Pink / White

## JH043J XS-XL KIDS VARSITY JACKET

### Key Features

- Welt contrast pockets
- Taped back neck
- Hanging loop at back neck

### Specification

- 70% Ringspun Cotton / 30% Polyester
- 65% Ringspun Cotton / 35% Polyester (Heather Grey)

### Fabric Weight

- 330gsm
- Adult sizes **pg.56**



Hawaiian Blue



Hawaiian Blue





Heather  
Grey

## JH072J XS-XL KIDS CUFFED JOGPANTS

### Key Features

- Side pockets
- Cuffed leg opening
- 1x1 rib waistband
- No drawcords – to comply with EU regulation

### Specification

- 80% Ringspun Cotton / 20% Polyester
- 75% Ringspun Cotton / 25% Polyester (Heather Grey)

### Fabric Weight

- 280gsm
- Adult sizes **pg.78**



New  
French  
Navy

## JH074J XS-XL KIDS TAPERED TRACK PANT

### Key Features

- Side pockets
- Tapered leg with cuffs
- 1x1 rib waistband
- No drawcords – to comply with EU regulation

### Specification

- 80% Ringspun Cotton / 20% Polyester
- 75% Ringspun Cotton / 25% Polyester (Heather Grey)

### Fabric Weight

- 280gsm
- Adult sizes **pg.80**



Heather  
Grey



Heather  
Grey



JH203 Organic Sweat /  
New French Navy Page 44



# MAKE YOUR MARK



JH030 AWDIs Sweat /  
Lavender Page 41

# PRINT GUIDE

JH001 College Hoodie /  
Dusty Rose Page 11



JH011 Epic Print Hoodie /  
Charcoal Page 22



## DOWNLOAD OUR PRINT GUIDE



## GARMENT PRINTING:

- SCREENPRINTING
- DTG
- TRANSFER
- SUBLIMATION
- EMBROIDERY







# CONTRAST COLOUR GUIDE

## JH003 VARSITY HOODIE / JH003J KIDS VARSITY HOODIE\*



## JH009 BASEBALL HOODIE / JH009J KIDS BASEBALL HOODIE\*



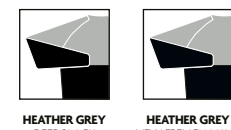
## JH018 NAUTICAL STRIPE HOODIE



## JH033 BASEBALL SWEAT



## JH038 COLOUR BLOCK SWEAT



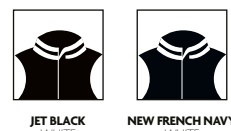
## JH041 COLLEGE JACKET



## JH043 VARSITY JACKET / JH043J KIDS VARSITY JACKET\*



## JH049 VARSITY PUFFER JACKET



## JH051 URBAN VARSITY ZOODIE



## JH053 VARSITY ZOODIE



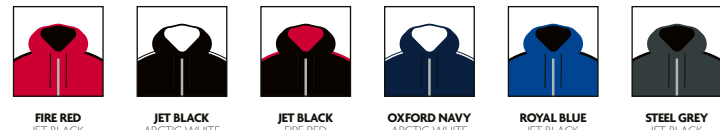
## JH059 RETRO ZOODIE



## JH063 BASEBALL ZOODIE



## JH066 SPORTS POLYESTER ZOODIE



## JH103 GAME DAY HOODIE





# OUR FABRICS

## COLLEGE FABRIC



## GRADUATE FABRIC



## STREET FABRIC



## SPORTS FABRIC



## SURF FABRIC



## HEATHER FABRIC



## ORGANIC FABRIC



## FRENCH TERRY FABRIC



## WASHED FABRIC



## ELECTRIC FABRIC



## SUPASOFT FABRIC



## CHUNKY FABRIC



# PMS COLOUR GUIDE

NEW FRENCH NAVY PMS 5395C	OXFORD NAVY PMS 533C	NAVY SMOKE PMS 533C	DENIM BLUE PMS 534C	INK BLUE PMS 19-4033 TCX	ROYAL BLUE PMS 661C	SAPPHIRE BLUE PMS 300C	TROPICAL BLUE PMS 285C
AIRFORCE BLUE PMS 5405C	DUSTY BLUE PMS 17-4021 TCX	CORNFLOWER BLUE PMS 659C	SKY BLUE PMS 644C	HAWAIIAN BLUE PMS 2995C	TURQUOISE SURF PMS 311C	DEEP SEA BLUE PMS 3035C	JADE PMS 329C
PEPPERMINT PMS 3242C	FOREST GREEN PMS 627C	BOTTLE GREEN PMS 554C	COMBAT GREEN PMS 19-0509 TCX	OLIVE GREEN PMS 448C	MOSS GREEN PMS 561C	DUSTY GREEN PMS 16-5804 TCX	EARTHY GREEN NEW PMS 18-0420 TCX
KELLY GREEN PMS 347C	SPRING GREEN PMS 339C	ALIEN GREEN PMS 15-0545TCX	LIME GREEN PMS 15-0146TCX	APPLE GREEN PMS 358C	HOT CHOCOLATE PMS 440C	CARAMEL TOFFEE PMS 18-1031 TCX	CARAMEL LATTE NEW PMS 16-1323 TCX
MOCHA BROWN PMS 7531CP	DESERT SAND PMS 7502C	NUDE PMS 4665C	PEACH PERFECT PMS 489C	VANILLA MILKSHAKE PMS 7499C	SHERBET LEMON PMS 120C	SUN YELLOW PMS 109C	MUSTARD PMS 1245C
GOLD PMS 136C	ORANGE CRUSH PMS 1505C	PUMPKIN PIE NEW PMS 16-1149 TCX	GINGER BISCUIT NEW PMS 18-1250 TCX	BURNT ORANGE PMS 173C	SUNSET ORANGE PMS 179C	RED HOT CHILLI PMS 1945C	BRICK RED PMS 202C
RED RUST PMS 19-1334 TCX	FIRE RED PMS 200C	BURGUNDY PMS 7421C	BURGUNDY SMOKE PMS 7428C	PLUM PMS 511C	WILD MULBERRY PMS 7666C	PURPLE PMS 2617C	ULTRA VIOLET PMS 2685C
MAGENTA MAGIC PMS 258C	PINKY PURPLE PMS 674C	LAVENDER PMS 2563C	TRUE VIOLET PMS 271C	CRANBERRY PMS 215C	HOT PINK PMS 214C	LIPSTICK PINK PMS 191C	DUSTY PURPLE PMS 17-1610 TCX
DUSTY ROSE NEW PMS 17-1718 TCX	DUSTY PINK PMS 500CP	CANDYFLOSS PINK PMS 204C	BABY PINK PMS 1895C	JET BLACK PMS BLACK	DEEP BLACK PMS BLACK	BLACK SMOKE PMS 19-3902TCX	STORM GREY PMS BLACK 7C
SHARK GREY PMS 19-0201 TCX	CHARCOAL PMS 18-5210TCX	STEEL GREY PMS 425C	MOONDUST GREY PMS 428CP	HEATHER GREY PMS COOL GRAY 5C	ASH PMS COOL GRAY 2 UP	ARCTIC WHITE PMS WHITE	

ALL COLOURS HAVE THE NEAREST PANTONE REFERENCE LISTED – ACTUAL SHADES MAY VARY AS COLOUR REPRESENTATION IS ONLY AS ACCURATE AS THE PRINTING PROCESS WILL ALLOW.



# TO FIT GUIDE

## MEN'S / UNISEX CLOTHING

	<b>XS</b>	<b>S</b>	<b>M</b>	<b>L</b>	<b>XL</b>	<b>XXL</b>	<b>3XL</b>	<b>4XL</b>	<b>5XL</b>
TO FIT CHEST CM	68	91	101	111	121	132	142	152	157
TO FIT CHEST INCHES	34	36	40	44	48	52	56	60	62
TO FIT WAIST CM	28 – 30	30 – 32	32 – 34	34 – 36	36 – 38	38 – 40	40 – 42	42 – 44	44 – 46
TO FIT WAIST INCHES	71 – 76	76 – 81	81 – 86	86 – 91	91 – 96	96 – 101	101 – 106	106 – 111	111 – 116

<b>INTERNATIONAL SIZES</b>	<b>XS</b>	<b>S</b>	<b>M</b>	<b>L</b>	<b>XL</b>	<b>XXL</b>	<b>3XL</b>	<b>4XL</b>	<b>5XL</b>
FRENCH	40	42	44	46	48	50	52	54	56
ITALIAN	44	46	48	50	52	54	56	58	60
GERMAN	32	33	34	36	38	40	42	44	46
NETHERLANDS	32	33	34	36	38	40	42	44	46
SPAIN	40	42	44	46	48	50	52	54	56
USA	34	36	38	40	42	44	46	48	50

## LADIES' CLOTHING

	<b>6</b>	<b>8</b>	<b>10</b>	<b>12</b>	<b>14</b>	<b>16</b>	<b>18</b>
	<b>XXS</b>	<b>XS</b>	<b>S</b>	<b>M</b>	<b>L</b>	<b>XL</b>	<b>XXL</b>
TO FIT WAIST CM	22 – 24	24 – 26	26 – 28	28 – 30	30 – 32	32 – 34	34 – 36
TO FIT WAIST INCHES	56 – 61	61 – 66	66 – 71	71 – 76	76 – 81	81 – 86	86 – 91

<b>INTERNATIONAL SIZES</b>	<b>6</b>	<b>8</b>	<b>10</b>	<b>12</b>	<b>14</b>	<b>16</b>	<b>18</b>
FRENCH	34	36	38	40	42	44	46
ITALIAN	38	40	42	44	46	48	50
GERMAN	32	34	36	38	40	42	44
NETHERLANDS	32	34	36	38	40	42	44
SPAIN	34	36	38	40	42	44	46
USA	2	4	6	8	10	12	14

## CHILDREN'S CLOTHING

	<b>XXS</b>	<b>XS</b>	<b>S</b>	<b>M</b>	<b>L</b>	<b>XL</b>
CHEST	24"	26"	28"	30"	32"	34"
AGE	1 – 2	3 – 4	5 – 6	7 – 8	9 – 11	12 – 13
HEIGHT (CM)	90	102	114	126	138	150

<b>INTERNATIONAL SIZES</b>	<b>XXS</b>	<b>XS</b>	<b>S</b>	<b>M</b>	<b>L</b>	<b>XL</b>
CHEST	24"	26"	28"	30"	32"	34"
AGE	1 – 2	3 – 4	5 – 6	7 – 8	9 – 11	12 / 13
HEIGHT (CM)	80 – 92	98 – 104	110 – 116	122 – 128	134 – 146	152 – 158











# Just Hoods<sup>®</sup>

AWDiS

[www.justhoodsbyawdis.com](http://www.justhoodsbyawdis.com)

f @justhoods

📷 @justhoods

🐦 @justhoods